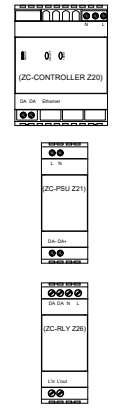


KEY

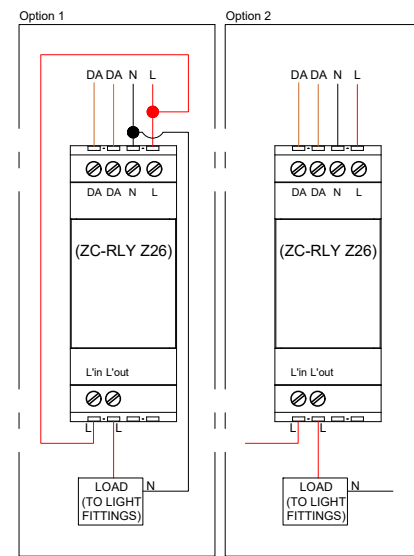


APPLICATION CONTROLLER
4 MCBs, requires Ethernet
connection (TCP/IP - Cat6)

DALI POWER SUPPLY
2 MCBs

1CH VOLT-FREE DALI RELAY
2 MCBs

Relay wiring diagram:



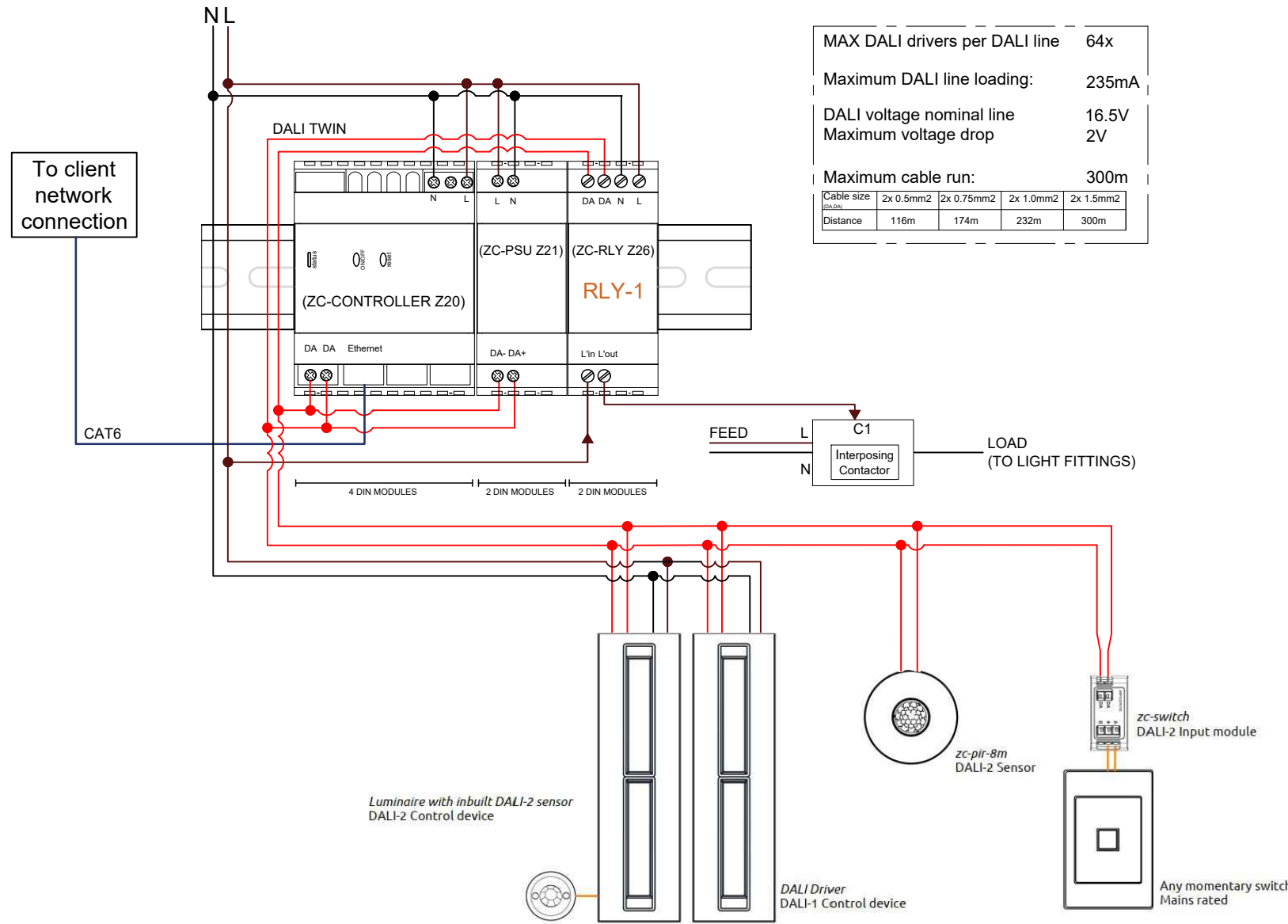
NOTE:
Output load: 10A resistive, 6A inductive. Use of
contactors is the responsibility of the EC.

GENERAL:

- * Refer to project specific Scope of Works documentation by IEL for project details.
- * Do not connect switches to mains voltage.
- * The contractor to supply all back boxes.
- * Cable type, sizing and routing remains the responsibility of the Electrical Contractor (EC). EC to ensure that the DALI cable has been wired as per the DALI rules.
- * Fast 10/100 TCP/IP interfaces should be installed to connect all application controllers. EC to ensure network connections and patches between controllers (CAT6) have been completed.

PRINT IN COLOUR

MAX DALI drivers per DALI line	64x
Maximum DALI line loading:	235mA
DALI voltage nominal line	16.5V
Maximum voltage drop	2V
Maximum cable run:	300m
Cable size (DALI)	2x 0.5mm ² 2x 0.75mm ² 2x 1.0mm ² 2x 1.5mm ²
Distance	116m 174m 232m 300m



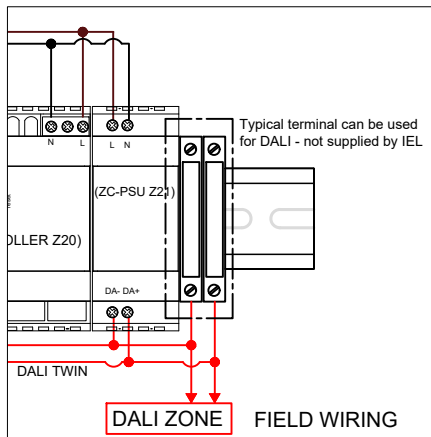
DALI "ZONE" DEFINITION:

A DALI zone is the DALI line made up of the collection of DALI devices on each single line/zone.

- Each zone must not exceed:
- * 64 DALI ECGs (drivers)
 - * 64 DALI ECDs (control devices eg switches and sensors, note max 30 sensors per zone)
 - * 300 metres of 1.5mm DALI 2-core cable

Devices on the zone/line can be powered by different phases or completely different supplies.

DALI zones have no relevance/reference to control zones, daylight harvesting zones, switching zones or DALI groups.



REV	DESCRIPTION	DATE	BY	REV	DESCRIPTION	DATE	BY
A	GENERAL ASSEMBLY		ML				



Intelligent Environments Limited.
PO Box 15153, New Lynn
Auckland 0640, New Zealand
P: +64 (9) 2813727
F: +64 (9) 2813729
E: service@i-e.co.nz
www.i-e.co.nz

SHEET TITLE:
**LIGHTING CONTROL
TYPICAL GENERAL ASSEMBLY
SINGLE APPLICATION CONTROLLER**

SCALE: NOT TO SCALE DATE: DRAWN: ML CS: RM PROJECT #: IEL-T12

